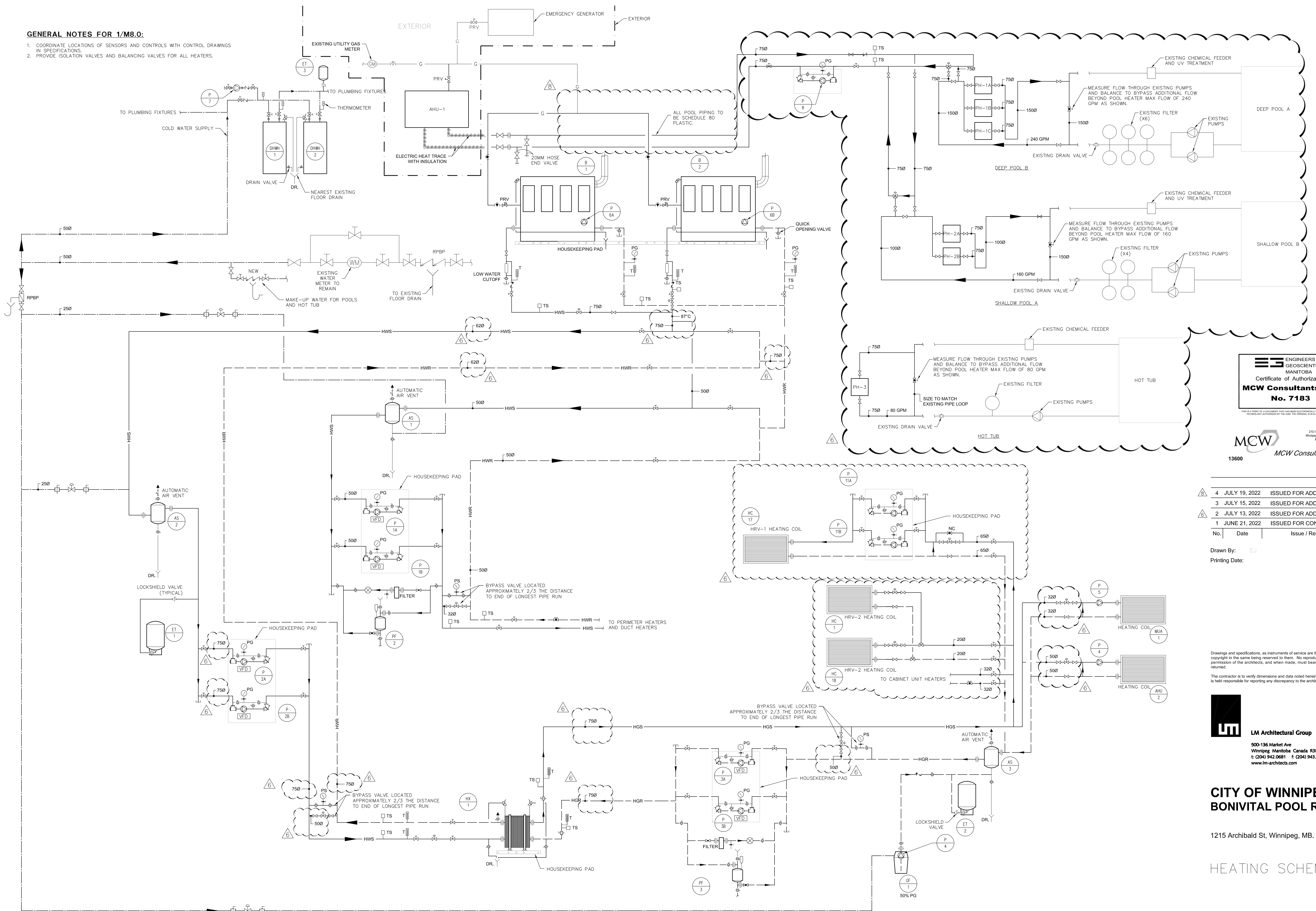


**GENERAL NOTES FOR 1/M8.0:**

- COORDINATE LOCATIONS OF SENSORS AND CONTROLS WITH CONTROL DRAWINGS IN SPECIFICATIONS.
- PROVIDE ISOLATION VALVES AND BALANCING VALVES FOR ALL HEATERS.



**ENGINEERS  
GEOSCIENTISTS  
MANITOBA**  
Certificate of Authorization  
**MCW Consultants Ltd.**  
No. 7183

**MCW** 235-1821 Wellington Avenue  
Winnipeg, Manitoba, R3H 0G4  
Phone: (204) 775-7900  
Fax: (204) 775-7900  
www.mcw.com  
13600 **MCW Consultants Ltd.**

No.	Date	Issue / Revision	By
4	JULY 19, 2022	ISSUED FOR ADD#08	
3	JULY 15, 2022	ISSUED FOR ADD#07	
2	JULY 13, 2022	ISSUED FOR ADD#06	
1	JUNE 21, 2022	ISSUED FOR CONSTRUCTION	

Drawn By: EJ  
Printing Date:

Drawings and specifications, as instruments of service are the property of the architects, the copyright in the same being reserved to them. No reproduction may be made without the permission of the architects, and when made, must bear their names. All prints to be returned.

The contractor is to verify dimensions and data noted herein with conditions on the site and is held responsible for reporting any discrepancy to the architects for adjustment.

**LM** **LM Architectural Group**  
500-136 Market Ave  
Winnipeg, Manitoba, Canada R3B 0P4  
t: (204) 942.0681 f: (204) 943.8676  
www.lm-architects.com

**CITY OF WINNIPEG  
BONIVITAL POOL RENEWAL**

1215 Archibald St, Winnipeg, MB.

HEATING SCHEMATIC